

Centre Number						Candidate Number				
Surname										
Other Names										
Candidate Signature										

For Examiner's Use	
Examiner's Initials	
Question	Mark
1	
2	
3	
4	
TOTAL	



General Certificate of Secondary Education
Foundation Tier
June 2014

Geography (Specification B)

90352F

F

Unit 2 Hostile world and Investigating the shrinking world

Thursday 22 May 2014 9.00 am to 10.30 am

For this paper you must have:

- the insert (enclosed)
 - a ruler.
- You may use a calculator.

Time allowed

- 1 hour 30 minutes

Instructions

- Use black ink or black ball-point pen. You may use pencil for maps, diagrams and graphs.
- Fill in the boxes at the top of this page.
- Answer **two** questions: **one** question from Section A and **one** question from Section B.
- You must answer the questions in the spaces provided. Do not write outside the box around each page or on blank pages.
- Do all rough work in this book. Cross through any work you do not want to be marked.
- Use case studies to support your answers where appropriate.

Information

- The marks for questions are shown in brackets.
- The maximum mark for this paper is 86.
- You will be marked on your ability to:
 - use good English
 - organise information clearly
 - use specialist vocabulary where appropriate.
- Spelling Punctuation and Grammar will be assessed in questions 1(f)(vi) or 2(f) and 3(f) or 4(e). The marks available for Spelling, Punctuation and Grammar (**SPaG**) are shown below the mark allocation for each question.



J U N 1 4 9 0 3 5 2 F 0 1

Section A – Hostile world

Answer **one** question from Section A, either Question 1 **or** Question 2.

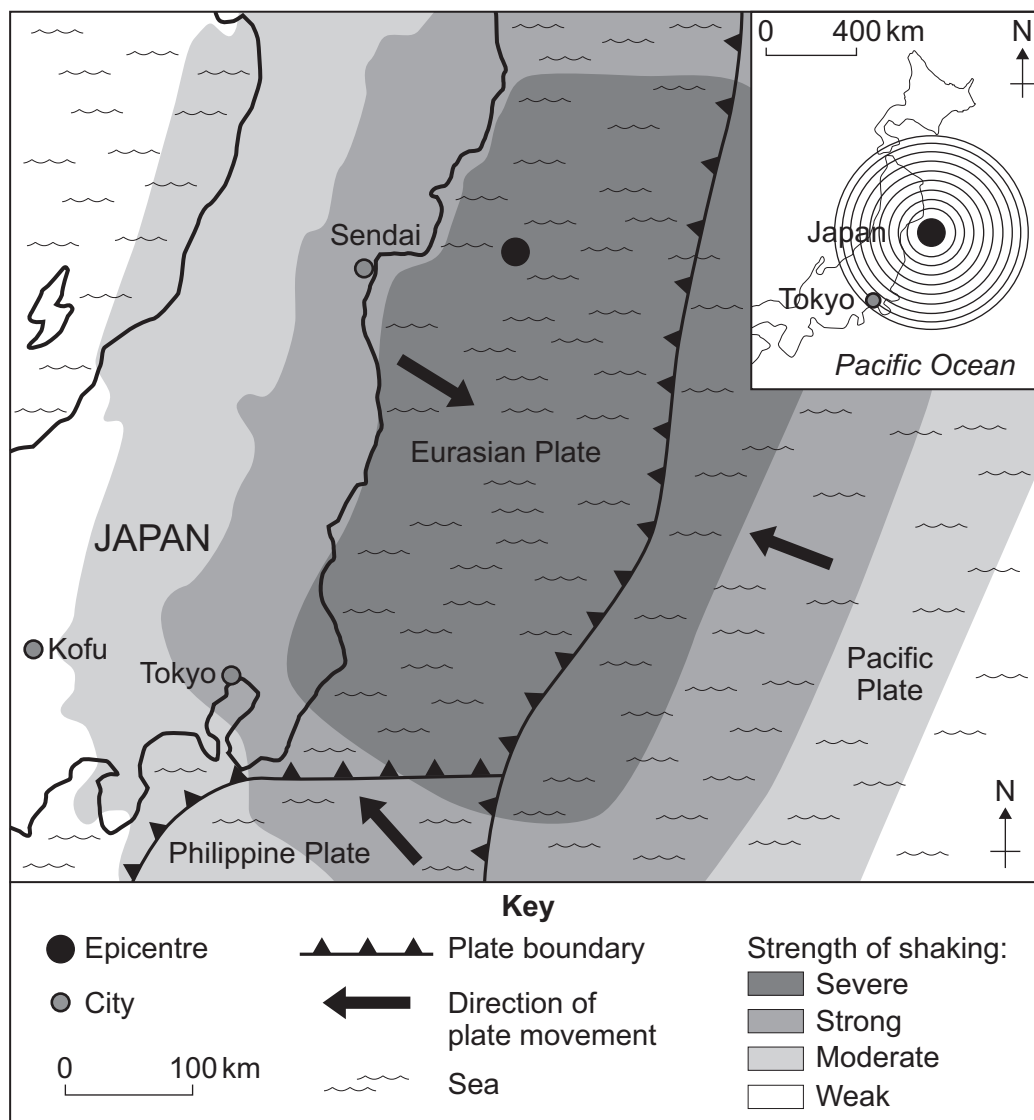
Use case studies to support your answers where appropriate.

Total for this question: 43 marks

Living with natural hazards

- 1 (a) Study **Figure 1**. **Figure 1** shows information about an earthquake. The earthquake affected Japan in March 2011.

Figure 1



1 (a) (i) Use **Figure 1** to complete the sentences below.

Circle the correct answer in each set of brackets.

[2 marks]

The Eurasian plate and the Pacific plate are [**moving apart** / **pushing together**] .

The earthquake epicentre was to the [**west** / **east**] of Japan.

1 (a) (ii) What was the strength of shaking in Sendai?

[1 mark]

.....

1 (a) (iii) The earthquake did not cause any damage in Kofu. Suggest why.

[1 mark]

.....
.....

1 (b) Give **one** example of a primary effect of an earthquake and **one** example of a secondary effect of an earthquake.

[2 marks]

Primary effect:

.....
.....

Secondary effect:

.....
.....

Question 1 continues on the next page

Turn over ►



1 (c) Suggest how the effects of earthquakes can be reduced.

[5 marks]

.....

.....

.....

.....

.....

.....

.....

.....

.....

.....

.....

Extra space

.....

.....

.....

.....



1 (d) Complete the paragraph below which describes the formation of volcanoes.
Choose the **four** correct terms from the list below.

[4 marks]

- | | | | |
|---------------------|--------------|---------------|-------------|
| destructive | magma | plates | ash |
| conservative | lava | layers | soil |

The Earth's crust is divided into a number of tectonic

Earthquakes and volcanoes occur in long, narrow belts where the Earth's plates meet. They usually occur at constructive and

..... plate boundaries. Volcanoes are formed when

..... rises to the Earth's surface through cracks in the Earth's crust. A volcanic eruption can cover large areas of land with lava, and volcanic rocks.

1 (e) Explain why people live in areas at risk from volcanic eruptions.

[5 marks]

.....

.....

.....

.....

.....

.....

.....

.....

.....

.....

.....

Extra space

.....

.....

.....

.....

Turn over ►



1 (f) Study **Figure 2** on the insert. **Figure 2** gives information about a tropical storm (Hurricane Dean) in 2007.

1 (f) (i) Use **Figure 2** to decide whether the following statements are true.

Tick the **two** correct boxes.

[2 marks]

Statement	True
On 17 August 2007 Hurricane Dean was over the Pacific Ocean.	
On 17 August 2007 Hurricane Dean was to the south of Puerto Rico.	
On 17 August 2007 Hurricane Dean was at latitude 15° north and longitude 66° west.	
On 17 August 2007 Hurricane Dean was to the north of Puerto Rico.	

1 (f) (ii) Name **one** country that Hurricane Dean was expected to pass over on 20 August 2007.

[1 mark]

.....

1 (f) (iii) How far was the hurricane predicted to travel between 21 August, 1.00 am and 22 August, 1.00 am?

[1 mark]

..... km.

1 (f) (iv) What might happen to the wind speed of Hurricane Dean after 22 August?

[1 mark]

.....



1 (f) (v) Give **one** reason for your answer to 1(f)(iv).

[2 marks]

.....

.....

.....

.....

1 (f) (vi) On 17 August, all the people in the coastal areas of the United States (US) shown in **Figure 2** should have been evacuated.

Do you agree with this statement? Give reasons for your decision.

[6 marks]
[SPaG 3 marks]

.....

.....

.....

.....

.....

.....

.....

.....

.....

.....

.....

.....

.....

.....

.....

.....

.....

.....

.....

.....

.....

.....

.....

Extra space

.....

.....

.....

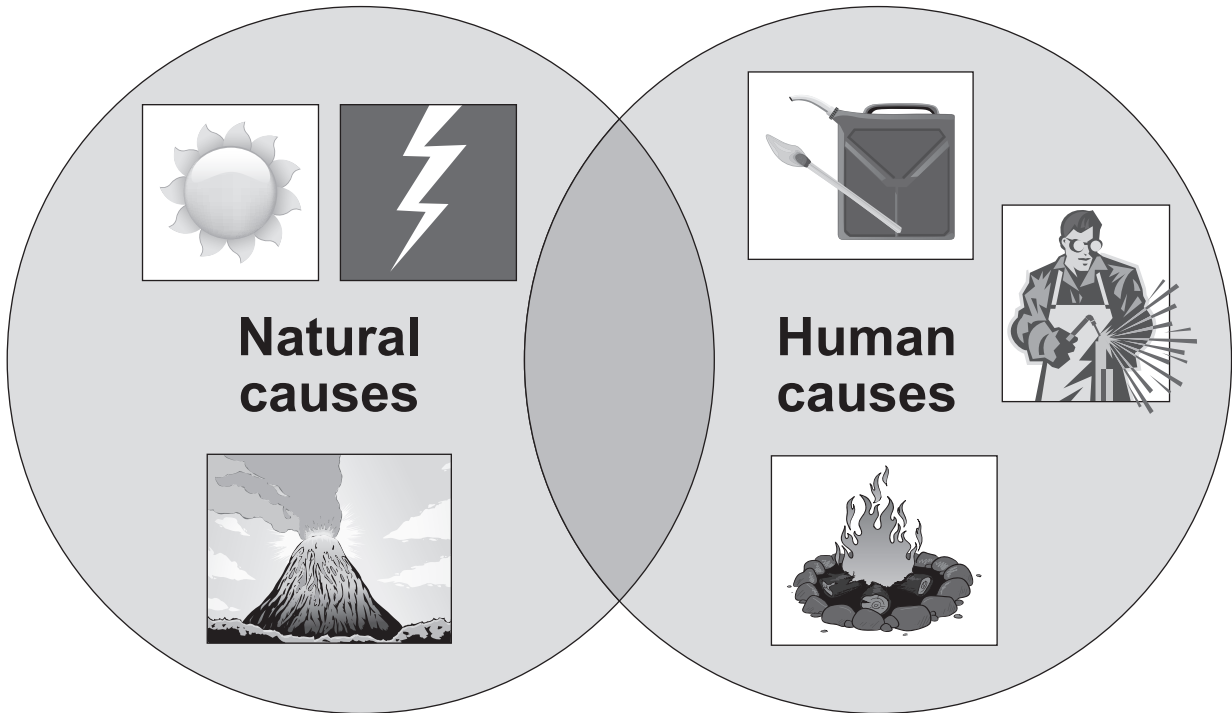
.....

.....

Turn over ►



1 (g) The following diagram shows causes of wildfires.



Using the diagram above to help you, explain how wildfires can start.

[4 marks]

.....

.....

.....

.....

.....

.....

.....

.....

.....

Extra space

.....

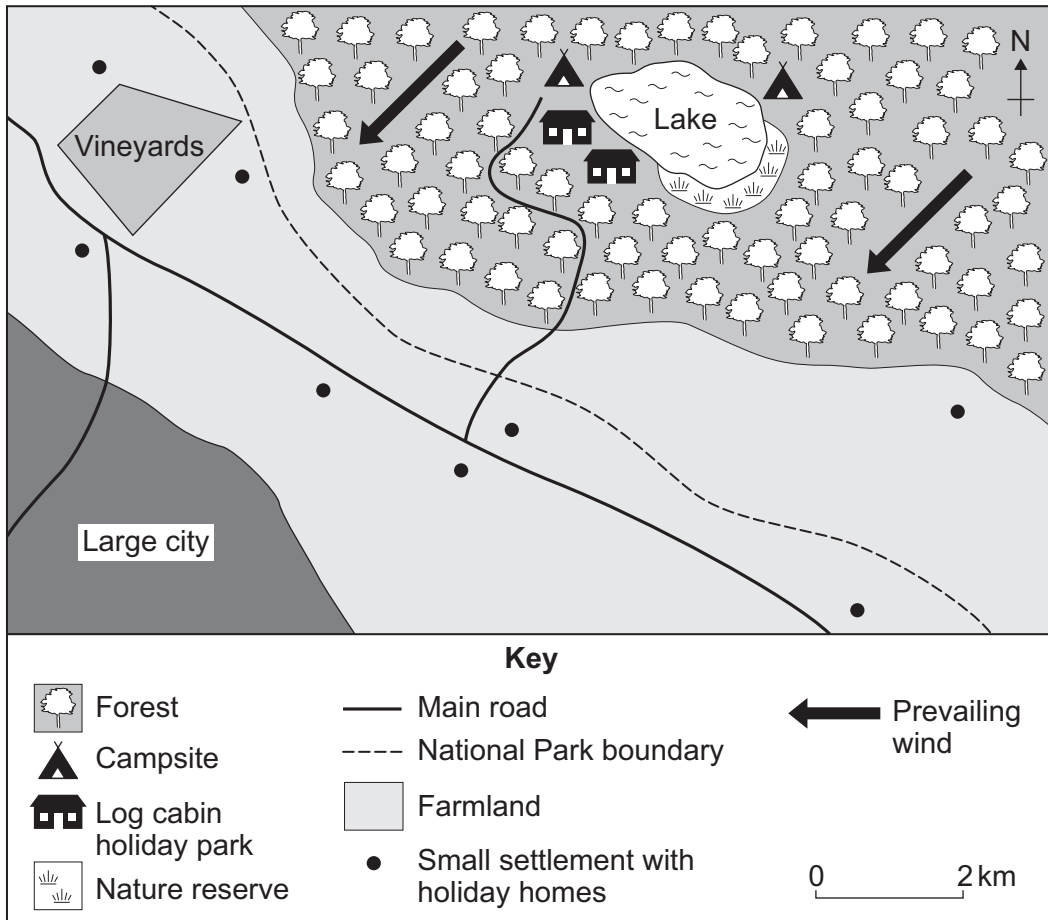
.....

.....



1 (h) Study Figure 3. Figure 3 shows an area at risk from wildfires.

Figure 3



Suggest why the area shown in **Figure 3** should be protected from wildfires.

[3 marks]

.....

.....

.....

.....

.....

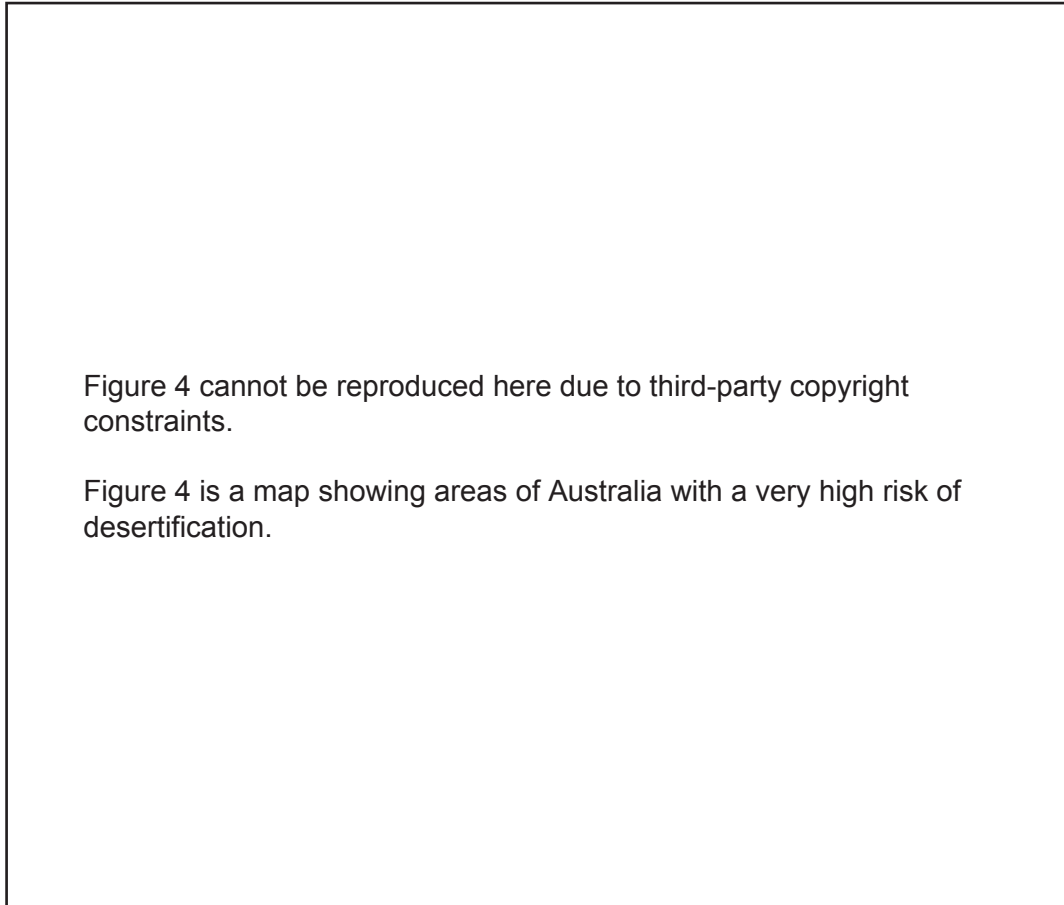
.....

Turn over ▶



The challenge of extreme environments**Total for this question: 43 marks**

- 2 (a)** Study **Figure 4**. **Figure 4** shows areas of Australia with a very high risk of desertification.

Figure 4

- 2 (a) (i)** Use **Figure 4** to decide which **two** of the following statements are correct.

Tick the **two** correct boxes.

[2 marks]

All of the areas with a very high risk of desertification are within 400km of an area of hot desert.	<input type="checkbox"/>
All of the states of Australia have areas with a very high risk of desertification.	<input type="checkbox"/>
Five of the states of Australia have areas with a very high risk of desertification.	<input type="checkbox"/>
All of the areas with a very high risk of desertification are within 200km of the coast.	<input type="checkbox"/>



2 (a) (ii) From which direction does the prevailing wind blow on the east coast of Australia?

[1 mark]

.....

2 (a) (iii) There are no areas with a very high risk of desertification on the east coast of Australia. Suggest why.

[2 marks]

.....
.....
.....
.....

2 (b) Explain how hot desert environments are formed.

Use **Figure 4** and your own knowledge.

[5 marks]

.....
.....
.....
.....
.....
.....
.....
.....
.....
.....
.....
.....
.....
.....

Extra space

.....
.....
.....
.....

Turn over ►



2 (c) Complete the following paragraph. The paragraph describes some causes of desertification.

Choose the **three** correct words from the list below.

[3 marks]

deposition

forest

planted

erosion

grassland

removed

Desertification has happened because trees in many areas on the edges of hot deserts have been Large numbers of animals are grazed on areas of dry and vegetation cover is lost. This loss of vegetation allows the ground to be open to wind and rain. The wind and rain cause soil

2 (d) Describe how desertification can be managed.

Use example(s) you have studied.

[5 marks]

.....
.....
.....
.....
.....
.....
.....
.....
.....
.....
.....



Extra space

.....

.....

.....

.....

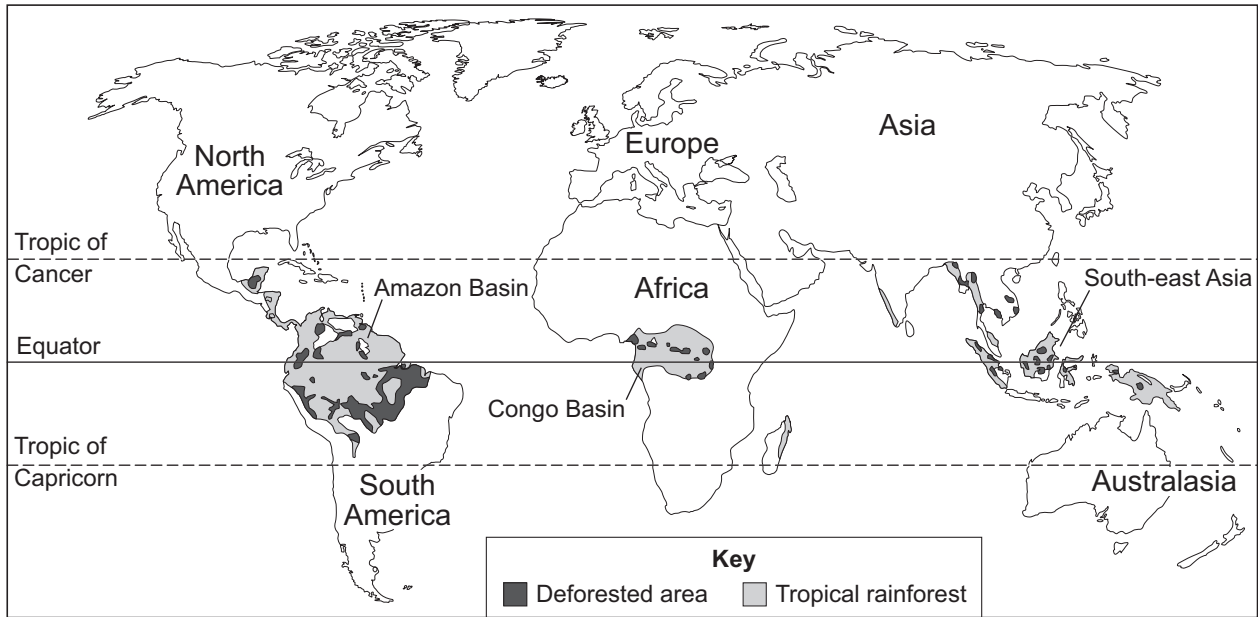
Question 2 continues on the next page

Turn over ►



2 (e) Study **Figure 5**. **Figure 5** is a world map showing areas of tropical rainforest and deforested areas.

Figure 5



2 (e) (i) Use **Figure 5** to decide if the following statements are **true** or **false**.

Tick the correct box to show whether each statement is **true** or **false**.

[3 marks]

Statement	True	False
Many areas of tropical rainforest are on the Equator.		
All areas of tropical rainforest are between the Tropics.		
South America has the smallest area of tropical rainforest.		

2 (e) (ii) Outline **one** reason for the distribution of areas of tropical rainforest shown in **Figure 5**.

[2 marks]

.....

.....

.....

.....



2 (e) (iii) Name the region in **Figure 5** with the largest deforested area.

[1 mark]

.....

2 (f) Study **Figure 6** on the insert. **Figure 6** gives information about an area of tropical rainforest in Ecuador, a less developed country in South America.

Drilling for oil in Yasuni National Park should be allowed.

Do you agree with this statement? Give reasons for your decision.

[6 marks]
[SPaG 3 marks]

.....
.....
.....
.....
.....
.....
.....
.....
.....
.....
.....
.....
.....
.....
.....
.....
.....
.....
.....
.....
.....

Extra space

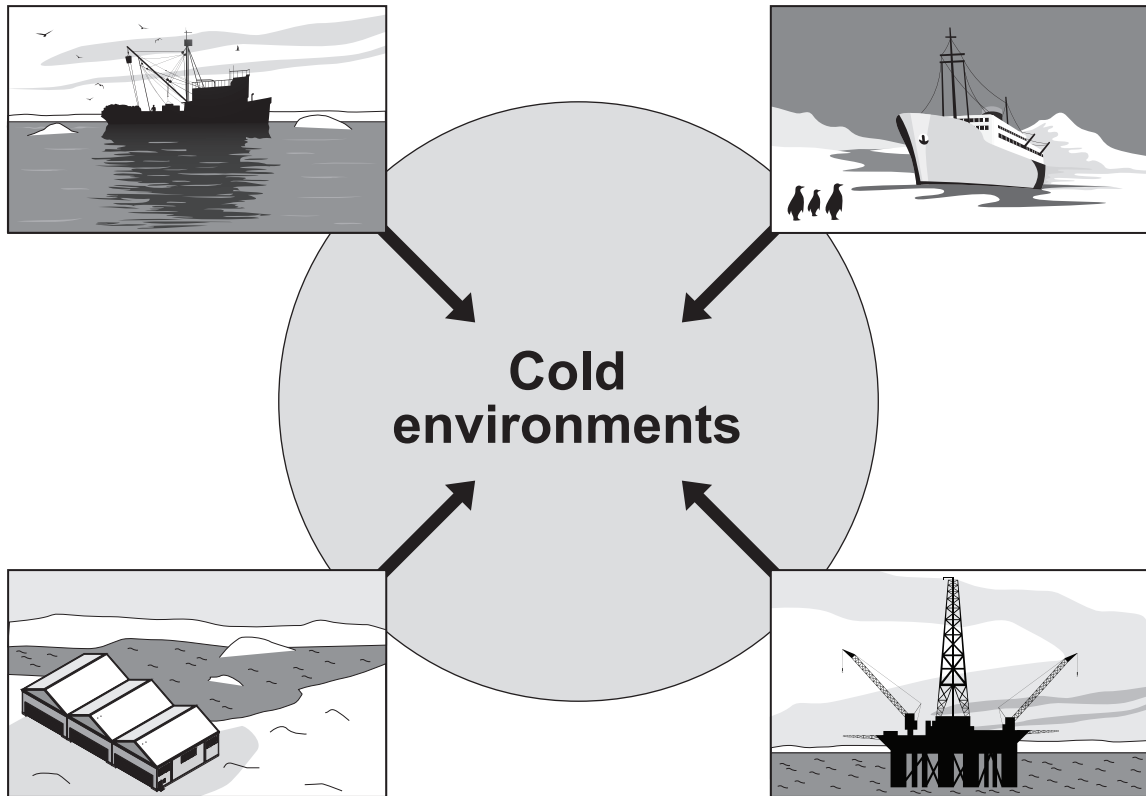
.....
.....
.....
.....
.....

Turn over ▶



2 (g) Study **Figure 7**. **Figure 7** shows some human activities in cold environments.

Figure 7



Using **Figure 7** to help you, suggest how cold environments provide economic opportunities.

[4 marks]

.....

.....

.....

.....

.....

.....

.....

.....

.....



Extra space

.....

.....

.....

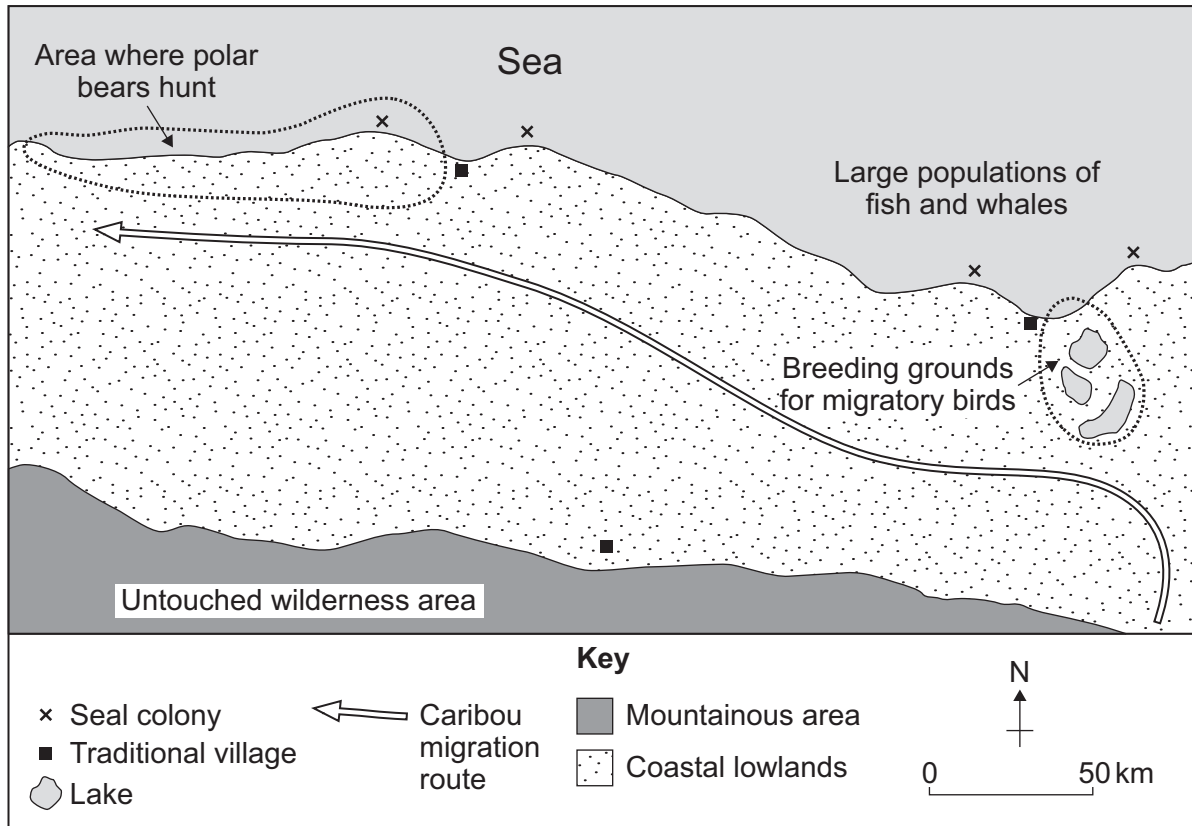
Question 2 continues on the next page

Turn over ►



2 (h) Study Figure 8. Figure 8 shows a region in a cold environment.

Figure 8



Suggest why the region shown in Figure 8 should be protected from development.

[4 marks]

.....

.....

.....

.....

.....

.....

.....

.....

.....



Extra space

.....

.....

.....

2 (i) Give **two** ways that cold environments can be protected.

[2 marks]

- 1
-
- 2
-

43

End of Section A

Turn over for Section B

Turn over ►



Section B – Investigating the shrinking world

Answer **one** question from Section B, either Question 3 **or** Question 4.

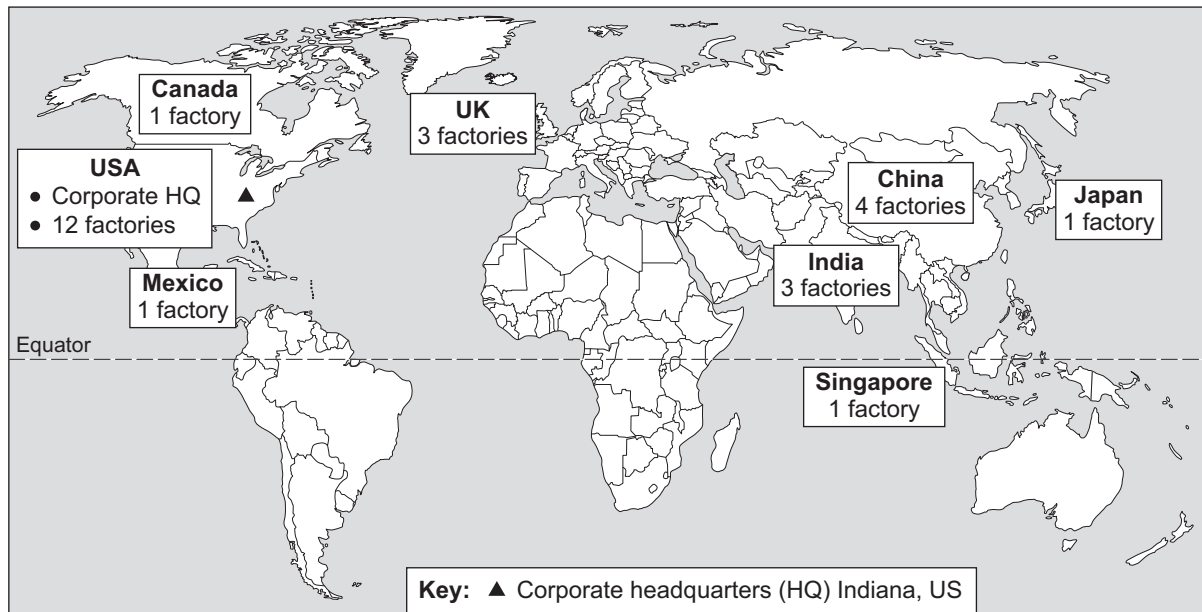
Use case studies to support your answers where appropriate.

Investigating the globalisation of industry

Total for this question: 43 marks

3 (a) Study **Figure 9**. **Figure 9** shows the location of factories owned by a Transnational Corporation (TNC).

Figure 9



3 (a) (i) What does 'transnational' mean?

[1 mark]

.....

.....



3 (a) (ii) Many of the TNC’s factories are located in the United States. The TNC has its corporate headquarters in Indiana.

Use **Figure 9** to decide which **two** of the following statements help to explain why so many of the TNC’s factories are in the United States.

Tick the **two** correct boxes.

[2 marks]

The TNC’s HQ is in Indiana, so managing the factories is easier.	<input type="checkbox"/>
Indiana is close to large markets in India and China.	<input type="checkbox"/>
The USA is a more developed country so labour costs are low.	<input type="checkbox"/>
Many other factories in the United States can supply parts.	<input type="checkbox"/>

3 (a) (iii) Suggest reasons why many TNCs have opened factories in less developed countries.

[3 marks]

.....

.....

.....

.....

.....

.....

3 (b) Describe **one** problem that the development of TNCs can cause.

Use an example of a TNC that you have studied.

[3 marks]

.....

.....

.....

.....

.....

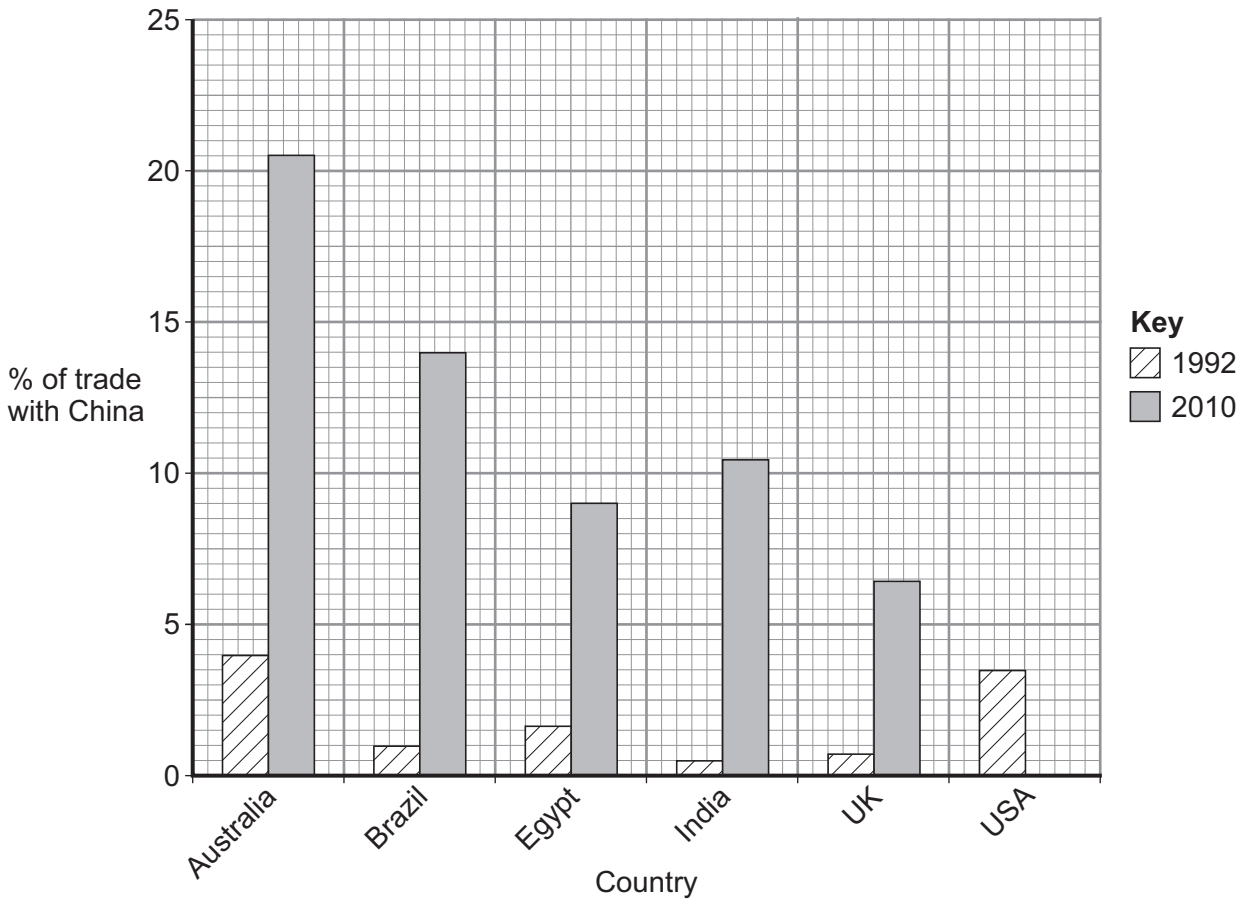
.....

Turn over ►



3 (c) Study Figure 10. Figure 10 gives information about six countries' trade with China.

Figure 10



3 (c) (i) Complete Figure 10.

Use the information below.

[2 marks]

USA: percentage of trade with China in 2010 = 14

3 (c) (ii) Describe the change in the UK's trade with China between 1992 and 2010 shown in Figure 10.

[2 marks]

.....

.....

.....

.....

Question 3 continues on page 24



Question 3 continues on the next page

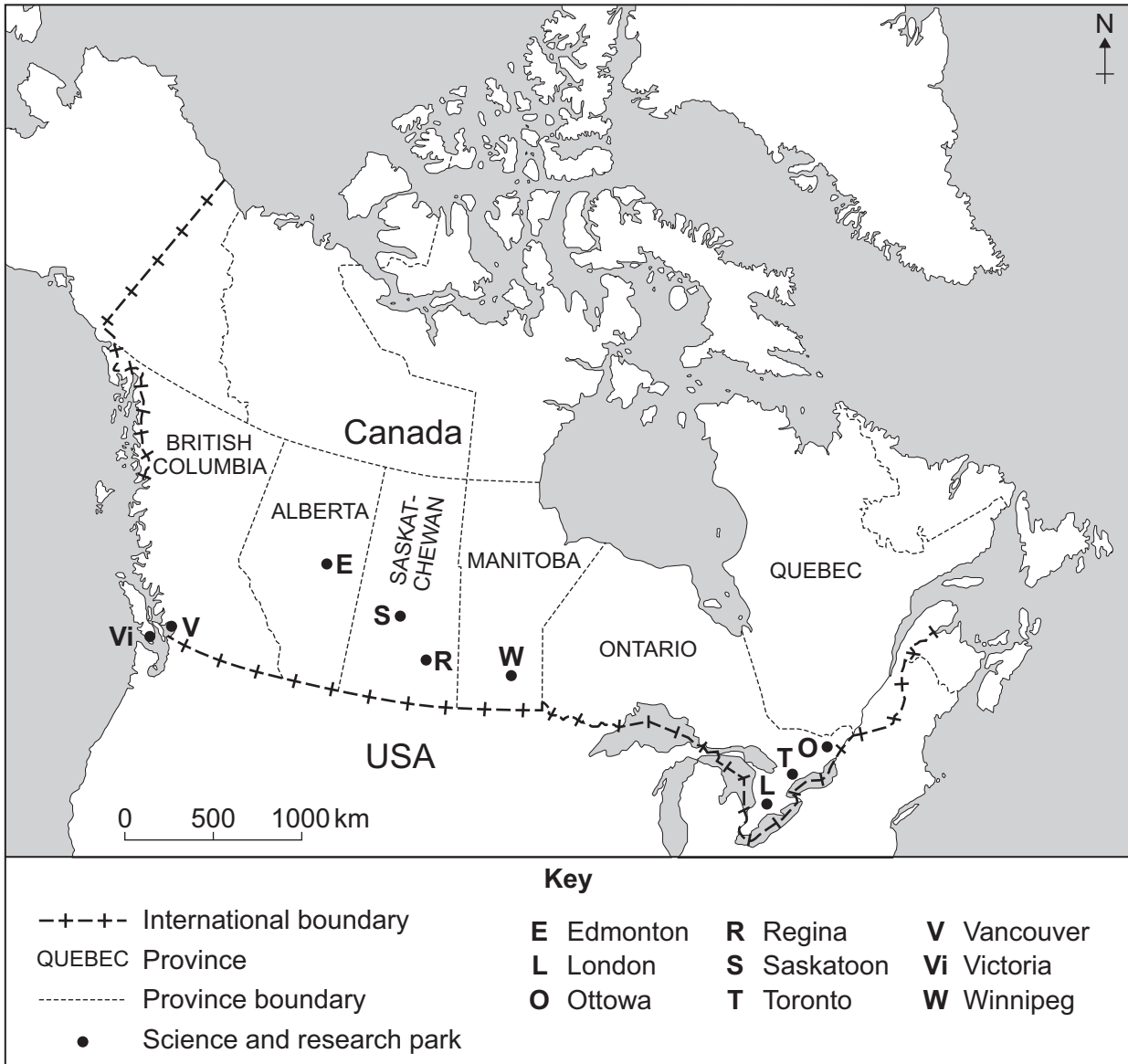
**DO NOT WRITE ON THIS PAGE
ANSWER IN THE SPACES PROVIDED**

Turn over ►



3 (d) Study **Figure 11**. **Figure 11** shows the location of cities that have science and research parks in Canada, a more developed country.

Figure 11



3 (d) (i) Complete the paragraph below. Use **Figure 11**.

Choose the **four** correct terms from the list below.

[4 marks]

- | | | | |
|-----------------|----------------|-----------------|------------------|
| 1000 | 200 | northern | southern |
| Manitoba | Ontario | Quebec | Vancouver |

Figure 11 shows that the cities that have science and research parks are in the half of Canada. All of the science and research parks are within km of the border with the USA. Winnipeg is the location of a science and research park in the province of British Columbia has science and research parks at Victoria and

3 (d) (ii) Suggest reasons for the growth of science and research parks in more developed countries such as Canada.

[5 marks]

.....

.....

.....

.....

.....

.....

.....

.....

.....

.....

Question 3 continues on the next page

Turn over ►



Extra Space

.....

.....

.....

.....

3 (e) Study **Figure 12**. **Figure 12** gives information about the UK, Canada and Sri Lanka in 2011.

Figure 12

Country	HDI	HDI ranking out of 187 countries	GNI (US\$)	GNI ranking out of 187 countries
UK	0.86	28	33 296	21
Canada	0.91	6	35 166	16
Sri Lanka	0.69	97	4 943	109

Human Development Index (HDI) – a measure of quality of life from 0 (lowest) to 1 (highest)

Gross National Income (GNI) – average income (US\$) per year

3 (e) (i) Complete the sentences below.

Circle the correct answer in **each** set of brackets.

[2 marks]

The HDI combines [**death rate** / **birth rate** / **life expectancy**]

with GNI and educational attainment to show a country’s level of development.

The development gap is the difference in [**economic** / **physical** / **urban**]

development between the world’s richest and poorest countries.



3 (e) (ii) Give **two** pieces of evidence to show that Canada is a more developed country.

Use **Figure 12**.

[2 marks]

1

.....

2

.....

3 (e) (iii) Describe the development gap between the UK and Sri Lanka.

Use **Figure 12**.

[2 marks]

.....

.....

.....

.....

3 (f) Describe the benefits that industrial growth can bring to an area.

Use an example(s) you have studied.

[6 marks]
[SPaG 3 marks]

.....

.....

.....

.....

.....

.....

.....

.....

.....

.....

Turn over ►



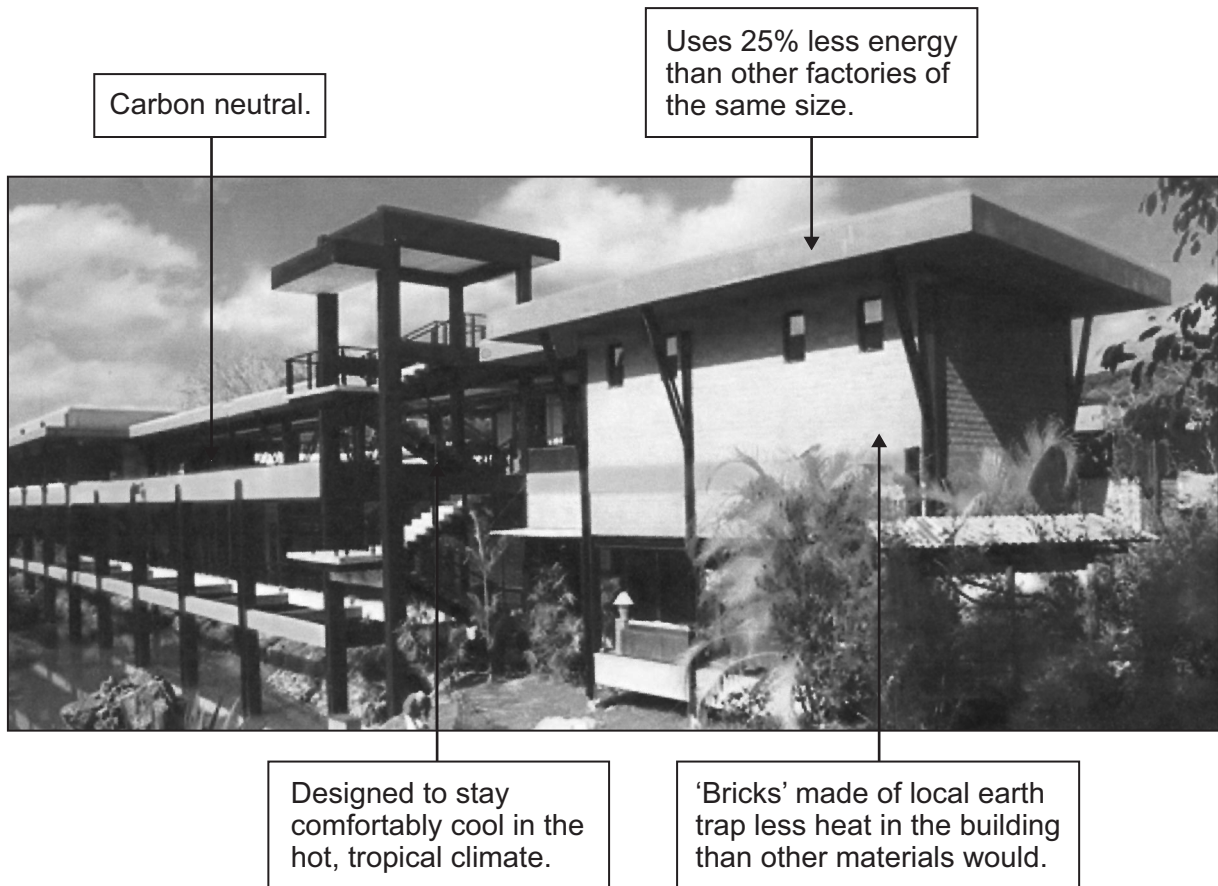
.....
.....
.....

Extra space

.....
.....
.....

3 (g) Study **Figure 13**. **Figure 13** gives information about a factory that has been designed to manage the impacts of industrial development sustainably.

Figure 13



Explain how the factory in **Figure 13** is an example of sustainable industrial development.

[6 marks]

.....

.....

.....

.....

.....

.....

.....

.....

.....

.....

.....

.....

.....

.....

.....

.....

.....

.....

.....

.....

.....

.....

Extra Space

.....

.....

.....

.....

.....

.....

.....

.....

.....

43

Turn over for the next question

Turn over ▶

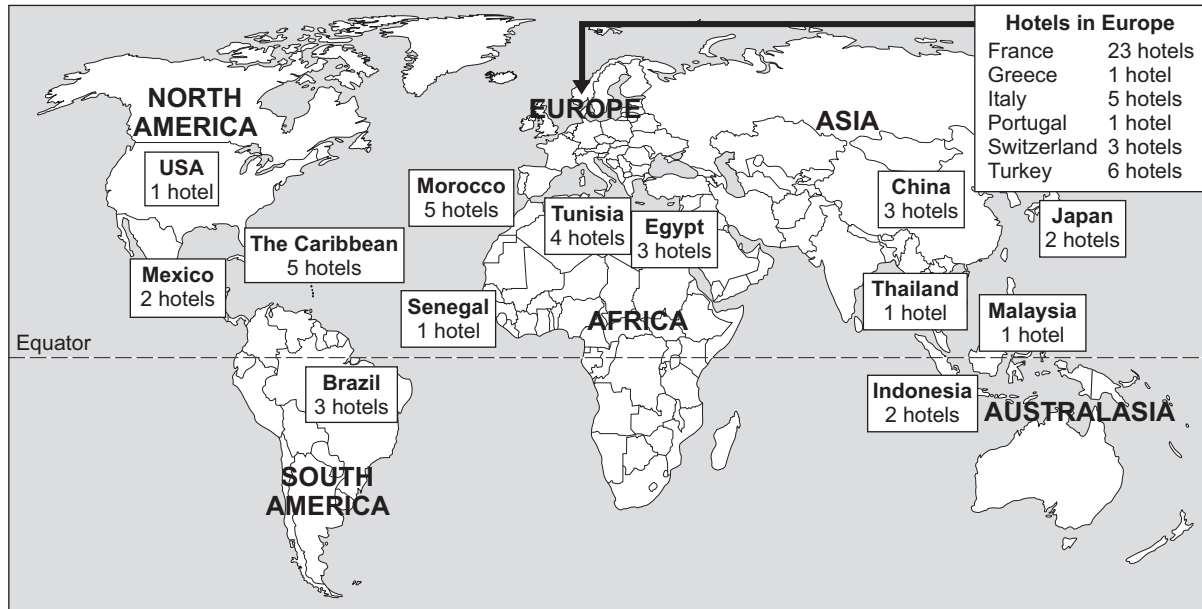


Investigating global tourism

Total for this question: 43 marks

4 (a) Study Figure 14. Figure 14 shows the location of hotels owned by a global tourism company.

Figure 14



4 (a) (i) What is meant by 'global' tourism?

[1 mark]

.....

.....

4 (a) (ii) Complete the following paragraph. Use Figure 14.

Choose the **three** correct terms from the list below.

[3 marks]

- northern
- southern
- Africa
- Europe
- France
- Morocco
- Spain
- South America

Most of the company's hotels are in the hemisphere,
 and most of these are in the continent of The country
 in which the company owns the most hotels is



4 (a) (iii) Use **Figure 14** to decide which of the following statements helps to explain why the global tourism company has recently opened more hotels in long-haul locations.

Tick the **three** correct boxes.

[3 marks]

People have less disposable income.	<input type="checkbox"/>
Demand for holidays in exotic locations has increased recently.	<input type="checkbox"/>
Governments in less developed countries do not want tourism development.	<input type="checkbox"/>
Governments in less developed countries often encourage tourism development.	<input type="checkbox"/>
Tourists are more familiar with travel to faraway places.	<input type="checkbox"/>
Tourists are less familiar with travel to locations in their own country.	<input type="checkbox"/>

4 (a) (iv) Suggest **one** way in which pollution from international travel affects the global environment.

[2 marks]

.....

.....

.....

.....

Question 4 continues on the next page

Turn over ►



4 (b) Describe **one** problem that the decline of tourism can cause.

Use an example you have studied.

[4 marks]

.....

.....

.....

.....

.....

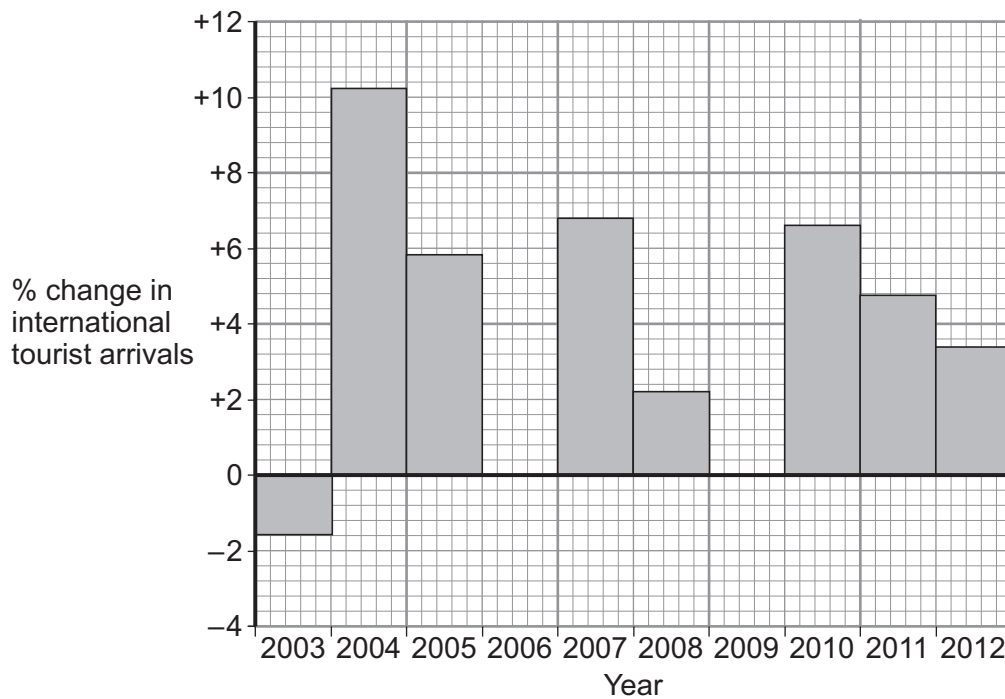
.....

.....

.....

4 (c) Study **Figure 15**. **Figure 15** shows changes in international tourist arrivals between 2003 and 2012.

Figure 15



4 (c) (i) Complete **Figure 15**.

Use the information below.

[2 marks]

Percentage change in international tourist arrivals

2006	+5.6
2009	-3.6

4 (c) (ii) Describe the change in international tourist arrivals between 2010 and 2012.
Use **Figure 15**.

[2 marks]

.....

.....

.....

.....

Question 4 continues on the next page

Turn over ►



- 4 (d) Study **Figure 16**. **Figure 16** gives information about the UK, Canada and Egypt in 2011.

Figure 16

Country	HDI	HDI ranking out of 187 countries	GNI (US\$)	GNI ranking out of 187 countries
UK	0.86	28	33 296	21
Canada	0.91	6	35 166	16
Egypt	0.64	113	5 269	107

Human Development Index (HDI) – a measure of quality of life from 0 (lowest) to 1 (highest)

Gross National Income (GNI) – average income (US\$) per year

- 4 (d) (i) Complete the sentences below.

Circle the correct answer in **each** set of brackets.

[2 marks]

The HDI combines [**death rate / birth rate / life expectancy**] with

GNI and educational attainment to show a country's level of development.

The development gap is the difference in [**economic / physical / urban**]

development between the world's richest and poorest countries.

- 4 (d) (ii) Give **two** pieces of evidence to show that the UK is a more developed country.

Use **Figure 16**.

[2 marks]

1

.....

2

.....



4 (d) (iii) Describe the development gap between the UK and Egypt.

Use **Figure 16**.

[2 marks]

.....

.....

.....

.....

4 (d) (iv) Explain how tourism can help to raise standards of living and income.

Use **Figure 16** and your own knowledge.

[5 marks]

.....

.....

.....

.....

.....

.....

.....

.....

.....

.....

.....

.....

.....

.....

.....

.....

.....

.....

.....

.....

Extra Space

.....

.....

.....

.....

.....

Turn over ▶



4 (e) Explain how tourism can cause conflict in tourist honeypots.

Use an example(s) you have studied.

[6 marks]
[SPaG 3 marks]

.....

.....

.....

.....

.....

.....

.....

.....

.....

.....

.....

.....

.....

.....

.....

.....

.....

.....

.....

.....

.....

.....

Extra Space

.....

.....

.....

.....

.....

Question 4 continues on page 38



Question 4 continues on the next page

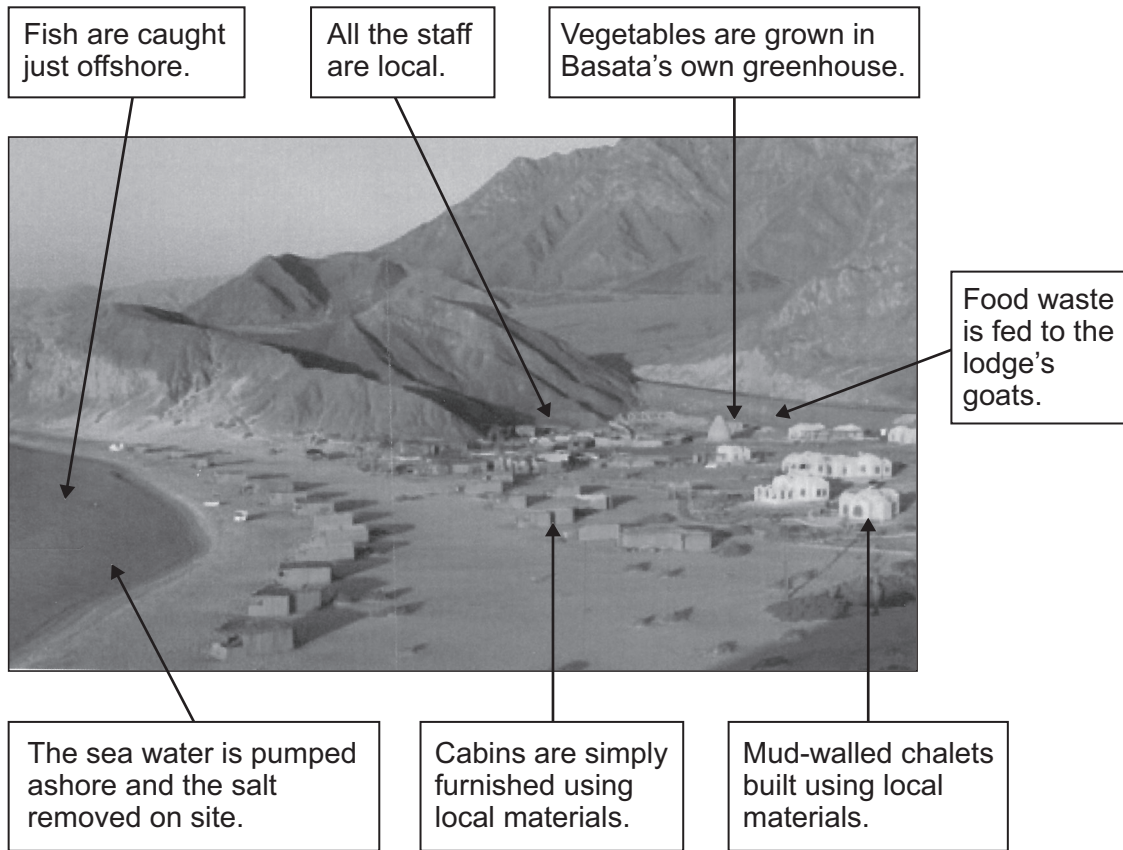
**DO NOT WRITE ON THIS PAGE
ANSWER IN THE SPACES PROVIDED**

Turn over ►



4 (f) Study **Figure 17**. **Figure 17** gives information about Basata Lodge. Basata Lodge is an ecotourism development.

Figure 17



Explain how the ecotourism development in **Figure 17** is an example of sustainable tourism.

[6 marks]

.....

.....

.....

.....

.....

.....

.....

.....

.....

.....



.....

.....

.....

Extra space

.....

.....

.....

.....

.....

43

END OF QUESTIONS



There are no questions printed on this page

**DO NOT WRITE ON THIS PAGE
ANSWER IN THE SPACES PROVIDED**

Acknowledgement of copyright-holders and publishers

Permission to reproduce all copyright material has been applied for. In some cases, efforts to contact copyright-holders have been unsuccessful and AQA will be happy to rectify any omissions of acknowledgements in future papers if notified.

Figure 1: © United States Geological Survey (USGS)
Figure 5: © United Nations
Figure 10: Data Source: Financial Times
Figure 13: © Holcim Foundation
Figure 15: © UNWTO, 9284401513
Figure 17: © Naftali Hilger

Copyright © 2014 AQA and its licensors. All rights reserved.

