

Centre Number						Candidate Number				
Surname										
Other Names										
Candidate Signature										

For Examiner's Use	
Examiner's Initials	
Question	Mark
1	
2	
3	
4	
5	
6	
7	
TOTAL	



General Certificate of Secondary Education
Higher Tier
June 2014

Geography (Specification A)

90301H

H

Unit 1 Physical Geography

Tuesday 13 May 2014 1.30 pm to 3.00 pm

For this paper you must have:

- the colour insert (enclosed)
 - a pencil
 - a rubber
 - a ruler.
- You may use a calculator.

Time allowed

- 1 hour 30 minutes

Instructions

- Use black ink or black ball-point pen.
- Fill in the boxes at the top of this page.
- **Answer THREE questions:**
 - **one** question from **Section A (Questions 1 – 4)**
 - **one** question from **Section B (Questions 5 – 7)**
 - **one** other question from **either** Section A **or** Section B.
- You must answer the questions in the spaces provided. Do not write outside the box around each page or on blank pages.
- Do all rough work in this book. Cross through any work you do not want to be marked.
- Use case studies to support your answers where appropriate.

Information

- The marks for questions are shown in brackets.
- The maximum mark for this paper is 75.
- You are reminded of the need for good English and clear presentation in your answers. Where applicable, questions should be answered in continuous prose. Quality of written communication will be assessed in all answers.

Advice

- Where appropriate, credit will be given for the use of diagrams to illustrate answers and where reference is made to your personal investigative work. You are advised to allocate your time carefully.



J U N 1 4 9 0 3 0 1 H 0 1

G/TI/103857/June14/E5

90301H

Section A

Answer **one** question from Section A and **one** question from Section B and **one** other question from **either** Section A **or** Section B.

Use case studies to support your answers where appropriate.

Total for this question: 25 marks

1 The Restless Earth

- 1 (a) Study **Figure 1**, a table showing the largest and deadliest earthquakes from 2008 to 2012.

Figure 1

Year	Largest Earthquakes			Deadliest Earthquakes		
	Location	Magnitude (Richter Scale)	Number of deaths	Location	Magnitude (Richter Scale)	Number of deaths
2012	Sumatra	8.6	No data	Philippines	6.7	113
2011	Japan	9.0	20 896	Japan	9.0	20 896
2010	Chile	8.8	507	Haiti	7.0	316 000
2009	Samoa Islands	8.1	192	Sumatra	7.5	1 117
2008	China	7.9	87 587	China	7.9	87 587



1 (a) (i) To what extent is there a relationship between the largest and deadliest earthquakes shown in **Figure 1**?

[3 marks]

.....

.....

.....

.....

.....

.....

1 (a) (ii) Outline **one** reason why the largest earthquakes do not always cause the most deaths.

[2 marks]

.....

.....

.....

.....

Question 1 continues on the next page

Turn over ►



1 (b) Draw an annotated diagram to explain why earthquakes occur at destructive plate margins.

[4 marks]



1 (c) Study **Figures 2a, 2b** and **2c** on the insert, photographs showing responses to the earthquake in Christchurch, New Zealand in 2010.

Use **Figures 2a, 2b** and **2c** and your own knowledge to describe how the three Ps (predict, protect and prepare) can help to reduce the effects of earthquakes.

[8 marks]

.....

.....

.....

.....

.....

.....

.....

.....



.....

.....

.....

.....

.....

.....

.....

.....

.....

.....

Extra space

.....

.....

.....

.....

.....

.....

1 (d) (i) What are fold mountains?

[2 marks]

.....

.....

.....

.....

Question 1 continues on the next page

Turn over ►



1 (d) (ii) Use a case study to describe how people use fold mountains.

[6 marks]

.....

.....

.....

.....

.....

.....

.....

.....

.....

.....

.....

.....

.....

.....

.....

.....

.....

.....

.....

.....

.....

Extra space

.....

.....

.....

.....

.....

.....

.....

25



Total for this question: 25 marks

2 Rocks, Resources and Scenery

2 (a) Outline the characteristics of igneous rocks.

[2 marks]

.....
.....
.....

2 (b) Describe the links between different rock types in the rock cycle.

[4 marks]

.....
.....
.....
.....
.....
.....
.....
.....
.....

Extra space
.....
.....
.....

Question 2 continues on the next page

Turn over ►



2 (c) Study **Figure 3** on the insert, a photograph of limestone pavement at Malham Cove in the Yorkshire Dales.

Figure 4 is a black and white copy of **Figure 3**.

2 (c) (i) On **Figure 4**, mark with an arrow and label **three** characteristics of the limestone pavement.

[3 marks]

Figure 4



2 (c) (ii) Explain the formation of limestone pavement.

[6 marks]

.....

.....

.....

.....

.....

.....

.....

.....

.....

.....

.....

.....

.....

.....

.....

.....

.....

.....

.....

.....

.....

.....

Extra space

.....

.....

.....

.....

2 (d) Outline why underground features are found in areas of Carboniferous limestone.

[2 marks]

.....

.....

.....

.....

Question 2 continues on the next page

Turn over ►



Total for this question: 25 marks

3 Challenge of Weather and Climate

3 (a) (i) Study **Figure 6** on the insert, a map showing average annual sunshine hours in the UK between 1981 and 2010.

Describe the pattern of average annual sunshine hours shown in **Figure 6**.

[3 marks]

.....

.....

.....

.....

.....

.....

3 (a) (ii) Outline why average annual sunshine hours vary in the UK.

[2 marks]

.....

.....

.....

.....

3 (b) (i) What is global climate change?

[2 marks]

.....

.....

.....

.....

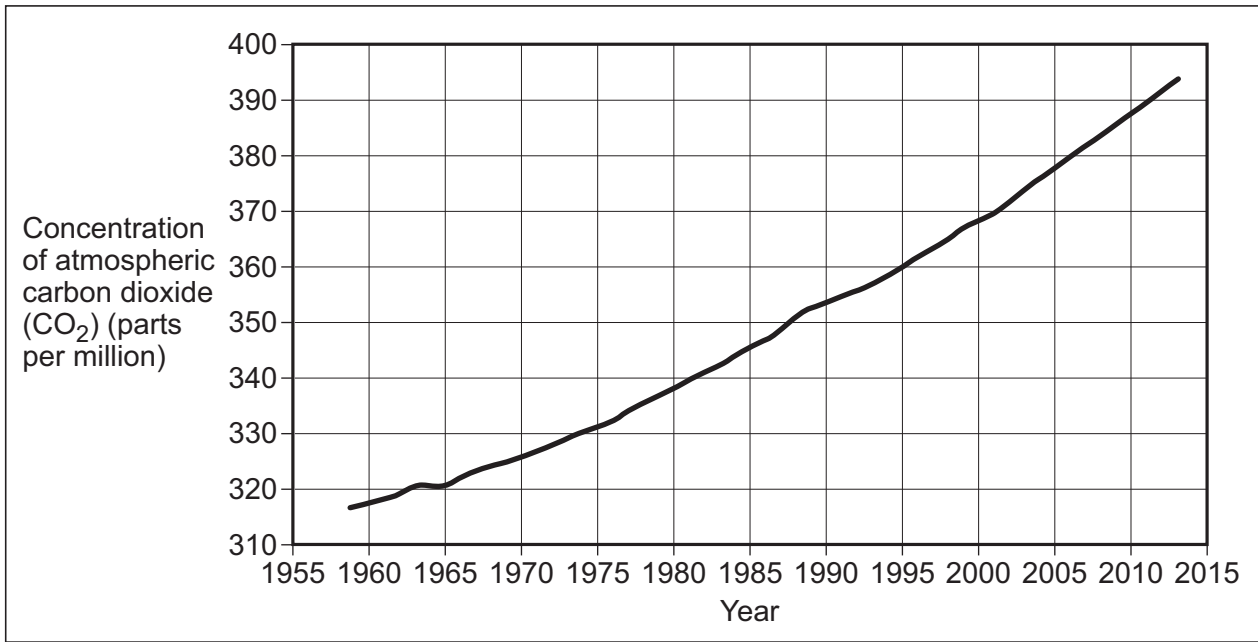
Question 3 continues on the next page

Turn over ►



3 (b) (ii) Study **Figure 7**, information about global warming.

Figure 7



Global warming is perhaps the most serious environmental issue of our time. This is because the world's population is growing rapidly. The graph above illustrates carbon dioxide (CO₂) levels measured annually. Furthermore, methane levels have already doubled, so thickening the 'chemical blanket'.

With the help of **Figure 7**, explain possible causes of global warming.

[4 marks]

.....

.....

.....

.....

.....

.....

.....

.....

.....



3 (c) Study **Figure 8**, a variety of newspaper headlines about weather in the UK.

Figure 8



'UK weather is becoming more extreme.'
Use **Figure 8** and your own knowledge to discuss this statement.

[8 marks]

.....

.....

.....

.....

.....

.....

.....

.....

.....

.....



.....

.....

.....

.....

.....

.....

.....

Extra space

.....

.....

.....

.....

.....

.....

.....

25

Turn over for the next question

Turn over ▶



Total for this question: 25 marks

4 Living World

4 (a) Study **Figure 9** on the insert, a photograph of vegetation in Death Valley, part of the Mojave Desert in the USA.

4 (a) (i) Describe the vegetation shown in **Figure 9**.

[3 marks]

.....

.....

.....

.....

.....

.....

4 (a) (ii) Explain how vegetation in hot deserts adapts to the climate.

[4 marks]

.....

.....

.....

.....

.....

.....

.....

.....

.....

Extra space

.....

.....

.....



Extra space
.....
.....
.....
.....

4 (c) Study **Figure 10**, extracts from geography textbooks about international co-operation in managing tropical rainforests.

Figure 10

Carbon credits
Rich countries can 'offset' their carbon emissions by buying 'carbon credits'. Money is paid to poor countries to maintain their rainforest.

Carbon sinks
In 2008 the Gola Forest on Sierra Leone's southern border with Liberia was protected from further deforestation by becoming a National Park. The 75 000 hectare park is supported by money from the European Commission, the French government and non-governmental organisations (NGOs) such as the Royal Society for the Protection of Birds (RSPB).

Use **Figure 10** and your own knowledge to explain how international co-operation can ensure that tropical rainforests are managed sustainably.

[8 marks]

.....
.....
.....
.....
.....
.....
.....
.....



Section B

Answer **one** question from Section A and **one** question from Section B and **one** other question from **either** Section A **or** Section B.

Use case studies to support your answers where appropriate.

Total for this question: 25 marks

5 Water on the Land

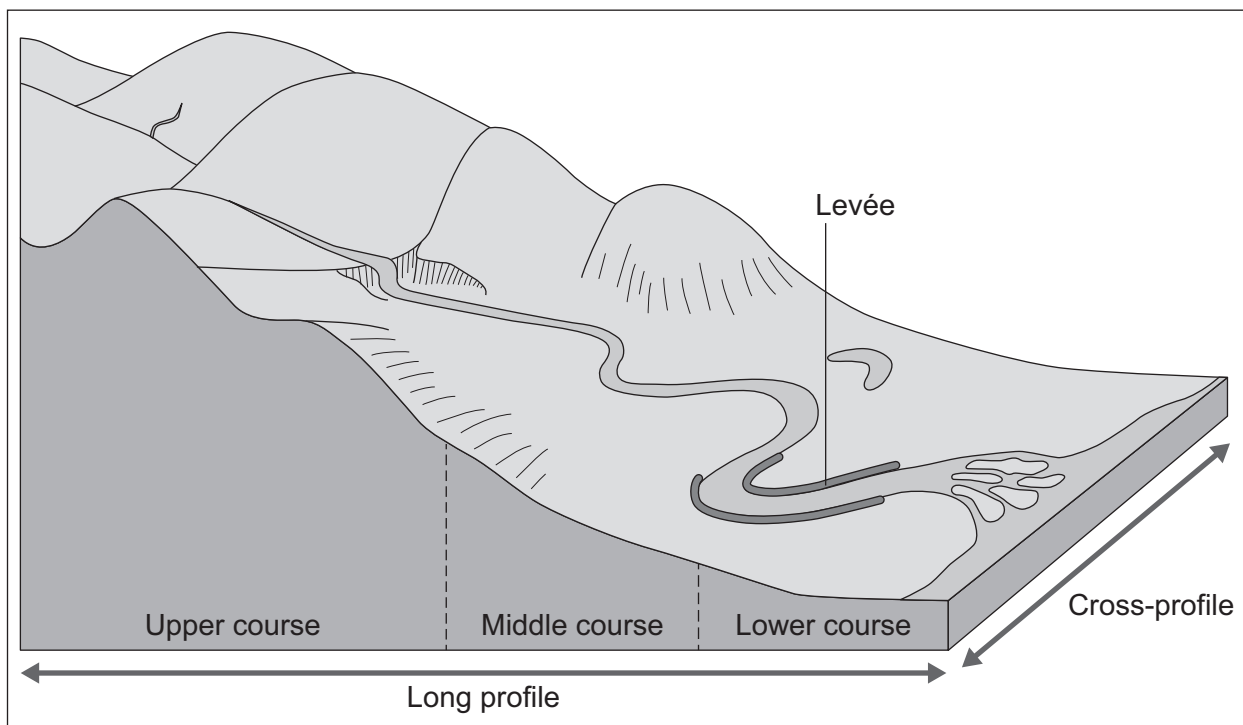
5 (a) (i) Study **Figure 11**, a block diagram showing how river landforms change downstream.

A levée is labelled on **Figure 11**.

Mark with an arrow and label **three other different** landforms – one found in each of the upper, middle and lower course of the river.

[3 marks]

Figure 11



5 (a) (ii) With the help of **Figure 11**, describe how the shape of a river valley changes downstream.

[4 marks]

.....

.....

.....

.....

.....

.....

.....

.....

Extra space

.....

.....

.....

5 (a) (iii) A levée is shown in **Figure 11**. What are levées?

[2 marks]

.....

.....

.....

.....

Question 5 continues on the next page

Turn over ►



5 (a) (iv) Explain the formation of levées.

[4 marks]

.....

.....

.....

.....

.....

.....

.....

.....

Extra space

.....

.....

.....

5 (b) (i) What is river flooding?

[2 marks]

.....

.....

.....

.....

5 (b) (ii) Outline **one physical** cause of flooding.

[2 marks]

.....

.....

.....

.....



Total for this question: 25 marks

6 Ice on the Land

6 (a) (i) **Figure 13** on the insert is a map showing the extent of sea ice in the Arctic Ocean on 26 August 2012.

Describe changes in the extent of Arctic sea ice shown in **Figure 13**.

[2 marks]

.....

.....

.....

.....

6 (a) (ii) Suggest reasons for the changes in the extent of Arctic sea ice shown in **Figure 13**.

[4 marks]

.....

.....

.....

.....

.....

.....

.....

.....

.....

Extra space

.....

.....

.....



6 (b) (i) Figure 14 on the insert is a photograph of Tal-y-Llyn in mid-Wales.

Draw a labelled sketch of the lake shown in **Figure 14**.

[3 marks]



Question 6 continues on the next page

Turn over ►



6 (b) (ii) A truncated spur is identified in **Figure 14** on the insert.
Describe a truncated spur.

[2 marks]

.....

.....

.....

.....

6 (b) (iii) Explain the formation of a truncated spur.

[4 marks]

.....

.....

.....

.....

.....

.....

.....

.....

Extra space

.....

.....

.....



6 (c) (i) What is an avalanche?

[2 marks]

.....

.....

.....

.....

Question 6 continues on the next page

Turn over ►



6 (c) (ii) **Figure 15** is a newspaper extract describing some issues in areas that are covered in snow and ice.

Figure 15

The scaling of Everest, spectacle of tourist industry excess

This year has been the busiest in the 59 years since Sir Edmund Hillary and Tenzing Norgay first conquered the world’s tallest peak. At least ten climbers, exhausted and dazed by the high altitude and lack of oxygen, have died on its slopes.

The high death toll, pictures of hundreds of climbers ascending in “traffic jams” on fixed lines and tales of rubbish, human waste and bodies strewn across the mountainside, have provoked criticism that – far from its glorious image as the peak of human achievement – scaling Everest is becoming something else: a commercialised tourist attraction, in which crowds of often inexperienced climbers pay up to \$110,000 (£72,000) to be taken to the top by sherpas, often with little regard for their own safety, or that of others.

A blogger who monitored the Everest climbing season said that 548 people climbed over a four day period this year, which is an average of 137 people per day. That is 58 per cent more crowded than 2007. The Nepalese Government now charges \$10,000 per person. Many people have called for stricter rules on issuing permits in order to limit numbers.

© The Times, 2/6/2012

With the help of **Figure 15**, discuss environmental and economic issues caused by tourism in areas covered by snow and ice.

[8 marks]

.....

.....

.....

.....

.....

.....

.....

.....

.....

.....



.....

.....

.....

.....

.....

.....

.....

Extra space

.....

.....

.....

.....

.....

.....

25

Turn over for the next question

Turn over ▶



There are no questions printed on this page

**DO NOT WRITE ON THIS PAGE
ANSWER IN THE SPACES PROVIDED**



Total for this question: 25 marks

7 The Coastal Zone

7 (a) Briefly describe how weathering can affect the coast.

[2 marks]

.....
.....
.....
.....

7 (b) **Figure 16** on the insert is a photograph of the coast in Cornwall.

7 (b) (i) Describe the landforms found in Zone A in **Figure 16**.

[3 marks]

.....
.....
.....
.....
.....
.....

7 (b) (ii) A beach is shown in **Figure 16**.

Describe this beach.

[2 marks]

.....
.....
.....
.....

Question 7 continues on the next page

Turn over ►



7 (b) (iii) Explain the formation of a beach.

[4 marks]

.....

.....

.....

.....

.....

.....

.....

.....

Extra space

.....

.....

.....

7 (c) (i) What is cliff collapse?

[2 marks]

.....

.....

.....

.....



7 (c) (ii) Explain why cliffs collapse.

[4 marks]

.....

.....

.....

.....

.....

.....

.....

.....

Extra space

.....

.....

.....

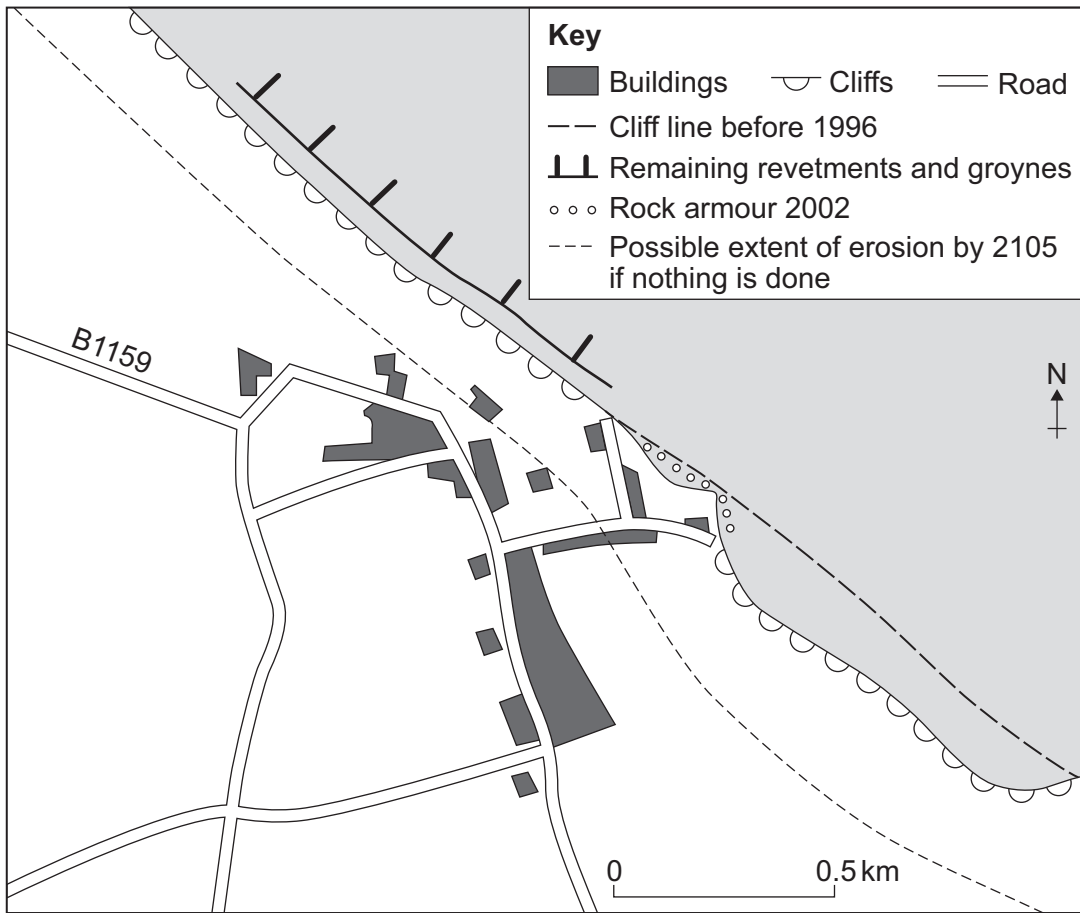
Question 7 continues on the next page

Turn over ►



7 (d) Figure 17 shows hard engineering strategies at Happisburgh in Norfolk.

Figure 17



With the help of **Figure 17**, discuss the costs and benefits of using hard engineering to reduce the risk of cliff collapse.

[8 marks]

.....

.....

.....

.....

.....

.....

.....

.....

.....

.....



There are no questions printed on this page

**DO NOT WRITE ON THIS PAGE
ANSWER IN THE SPACES PROVIDED**

Acknowledgement of copyright-holders and publishers

Permission to reproduce all copyright material has been applied for. In some cases, efforts to contact copyright-holders have been unsuccessful and AQA will be happy to rectify any omissions of acknowledgements in future papers if notified.

- Figure 1: courtesy of the US Geological Survey
Figure 4: J Canavan
Figure 7 (Text): Geofile Online, Nelson Thornes
Figure 7 (graph): NOAA
Figure 8: © The Times 2013
Figure 10 (top): Jane Ferretti & Brian Greasley, AQA A GCSE Geography Revision Guide, Philip Allan Updates, 2011.
Reproduced by permission of Philip Allan (for Hodder Education)
Figure 10 (bottom): Nelson Thornes
Figure 11: Andrew John, Rivers and Coasts, Hodder & Stoughton, 1998. Reproduced by permission of Hodder Education
Figure 15: © The Times 06 2012
Figure 17: Coastal diagram taken from Lucy Prentice's 'Geofile Online 537 Happisburgh: North Norfolk Coast Shoreline Management Plan DME', published by Nelson Thornes in January 2007.

Copyright © 2014 AQA and its licensors. All rights reserved.





General Certificate of Secondary Education
June 2014

Geography (Specification A)

90301H

Unit 1 Physical Geography

Insert

Figure 2a



Figure 2b



Figure 2c



Figure 3



Figure 5a



Figure 5b



Figure 5c



Figure 5d



Figure 6

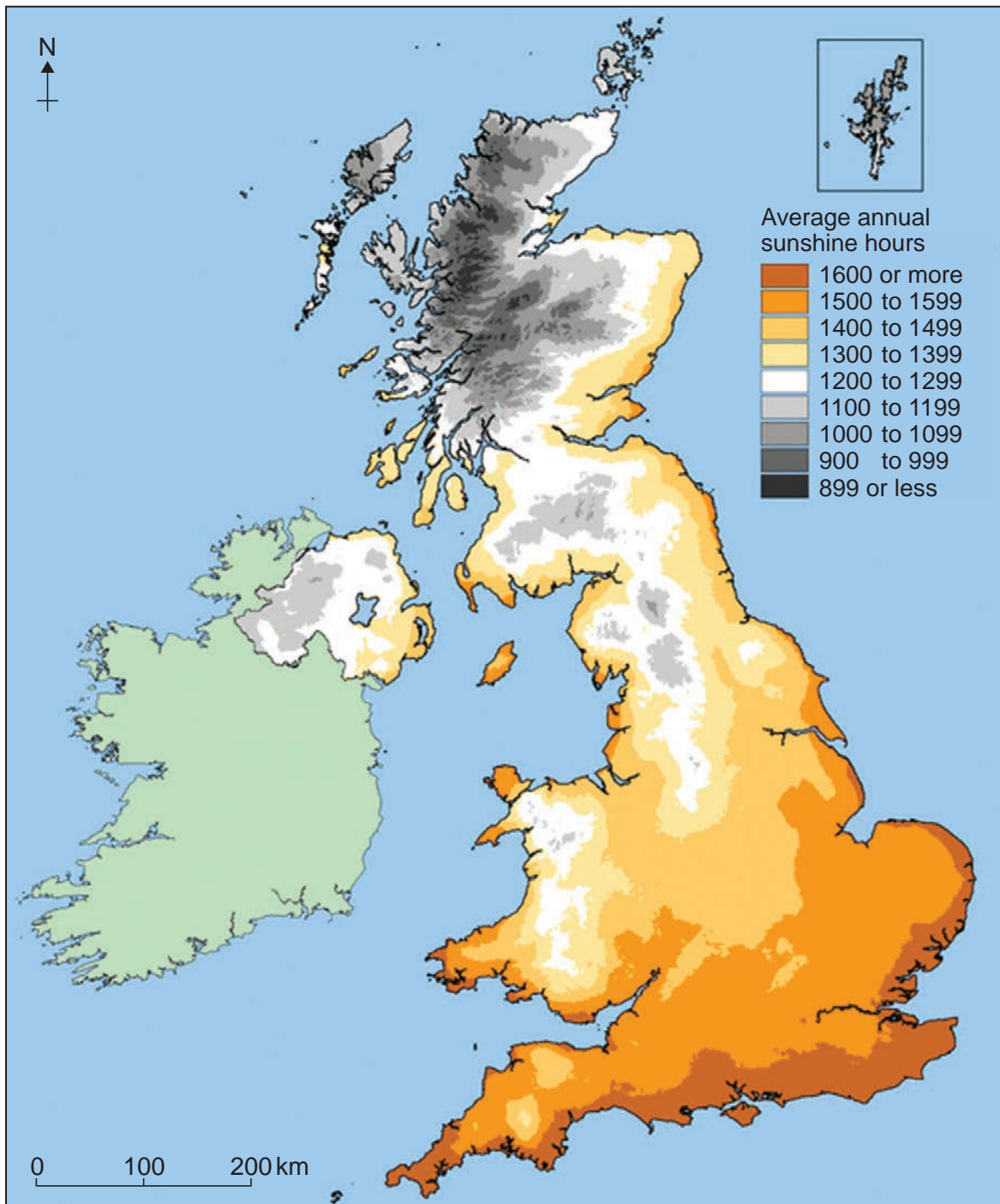


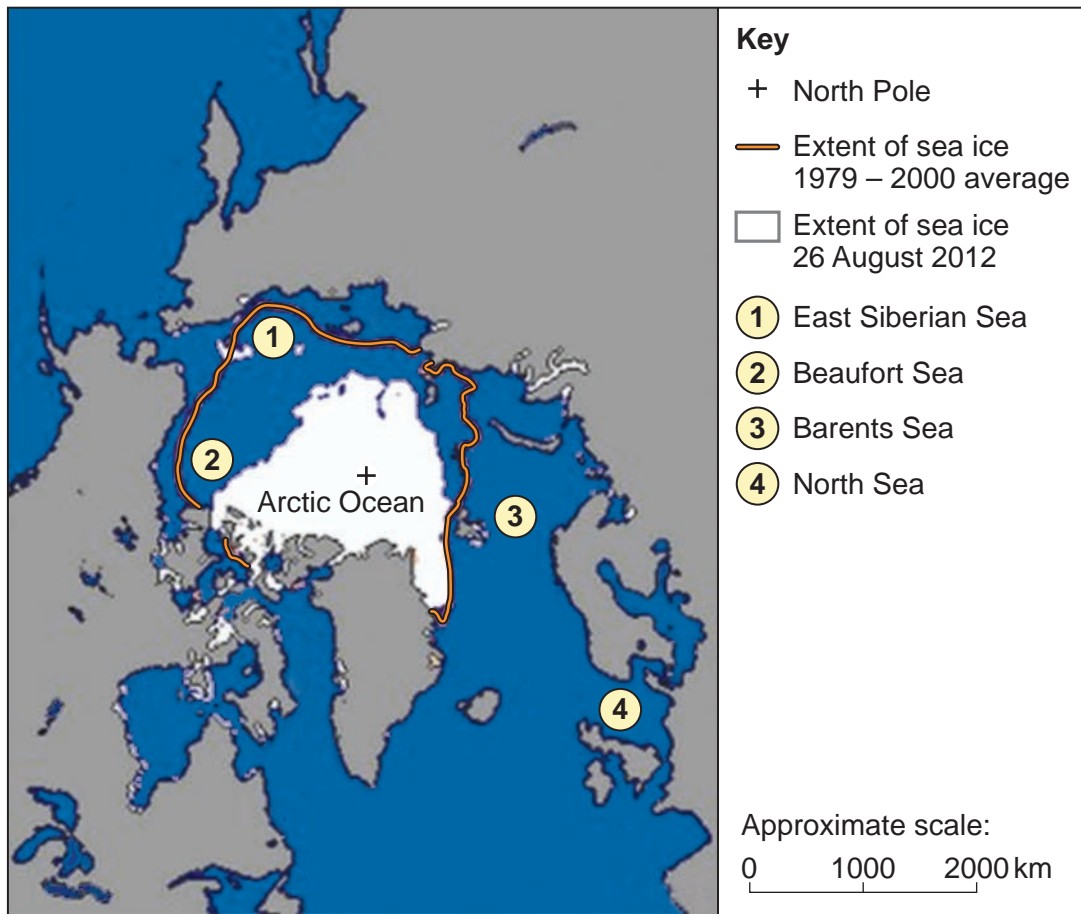
Figure 9



Figure 12



Figure 13



Turn over ►

Figure 14



Truncated spur

Figure 16



There is no resource material printed on this page

Acknowledgement of copyright-holders and publishers

Permission to reproduce all copyright material has been applied for. In some cases, efforts to contact copyright-holders have been unsuccessful and AQA will be happy to rectify any omissions of acknowledgements in future papers if notified.

Figures 2a, 2b & 2c: Mrs D Bacon
Figure 3: J Canavan
Figure 5a: Getty Images © Diane Macdonald
Figure 5b: Getty Images, Last Refuge
Figure 5c: Getty Images © Laurence Cartwright
Figure 5d: Getty Images / Paul Wheeler Photography
Figure 6: www.metoffice.gov.uk. Contains public sector information licensed under the Open Government Licence v1.0
Figure 9: Getty Images, Karl Weatherly
Figure 12: J Canavan
Figure 13: Data: NSIDC, Map: © BBC
Figure 14: Getty Images/Rory Trappe Photography. Copyright Rory Trappe 2009
Figure 16: J Canavan